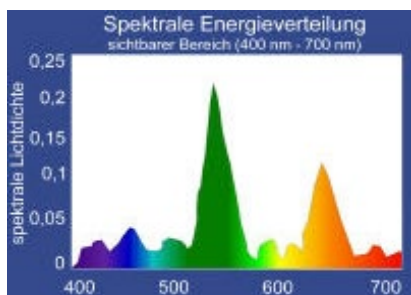
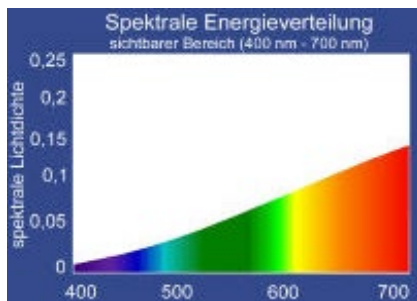


**Daylight D65**

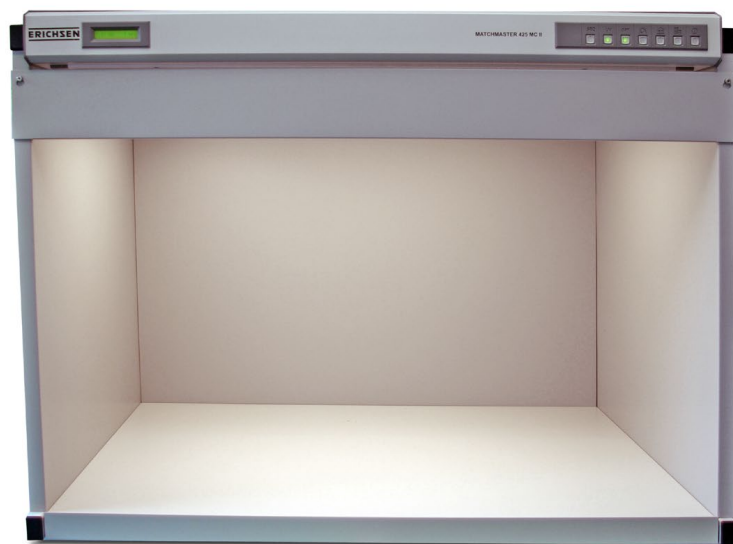
**Colour Matching  
Cabinets  
MATCHMASTER  
425 MC II/LED  
425 III/LED  
425 IV/LED**



**Office/Store Light TL84**



**Incandescent Light A**



**Model 425 MC II/LED**

testing equipment for quality management

**ERICHSEN**  
since 1910

**Technical Description**

**ASTM D1729  
ISO 3668  
SAE J361  
BS-950  
AS 1580  
AATCC Procedure #9**

**Colour Viewing and  
Inspection Systems for  
Colour Matching and  
Inspection**

## General Information

Particularly designed for manufacturers and users of coating materials, and for those frequently assessing colours and surfaces visually. Because an objective visual colour comparison can only be made under constant and defined conditions, three compact colour matching systems with several light sources are available for inspection and evaluation of colour samples like e. g. inks, colours, plastics, textiles, paper, colorants and other coloured materials; ideal for cosmetics, coatings, printing and packaging, advertising and graphic design, interior and fashion design.

The Colour Matching Cabinet **MATCHMASTER 425 MC II/LED** meets the requirements of an inspection of measuring equipment, as the working hours of the illuminants can be indicated. All systems offered comply with the requirements of the **ASTM D 1729 Standard** (including **CIE Publication 51**), **SAE J361** and **ISO 3668** for light quality and intensity, symmetry of illumination and viewing, ambient conditions, and uniformity.

The **MATCHMASTER 425 MC II/LED** is supplied as standard with a **Calibration Certificate** (light quality).

For the **MATCHMASTER 425 III/LED** and **425 IV/LED** a **Test Certificate** (light quality) is issued on delivery.

**Three types of light** can be simulated as standard versions:

In the field of colour assessment a central position is occupied by the light type **6500 Kelvin** (corresponds to standard light **D65**, artificial daylight, full spectrum equalized in terms of colour), which simulates the daylight at noon.

Besides also the current light type **4000 Kelvin** (corresponds to the standard light **TL84**, Office/Store Light, chartreuse, high luminosity, energy-efficient), can be generated.

The light type **2700 Kelvin** (corresponds to the standard light **A**, Home Light/Incandescent light) with high red contribution (reddish-orange, tungsten lamp), represents a normal living ambiance.

These **three** main light types are certainly the ones for judging the appearance of the colour of a product in everyday life of the enduser.

Furthermore, the optional light type **3000 Kelvin** (corresponds to the light type **TL83**, greenish, low bandwidth, energy-efficient) as well as the **UV Light** (for the determination of optical brightening and fluorescent whitening agents as well as the colouration of fluorescent substances of pigments) are available as standard light types.

## MATCHMASTER 425 MC II/LED Microprocessor-controlled



### Design and Function

The **MATCHMASTER 425 MC II/LED** comprises of metal sheets lacquered conforming to standards and can be put together with the help of a crosstip screwdriver within some minutes. The solid and carefree metal housing is open at the front side; if larger samples have to be assessed, the cabinet can be used without side parts.

The **Standard Light Cabinet MATCHMASTER 425 MC II/LED** is a colour comparison instrument with **five different light sources** (**6500 K (D65)**, **4000 K (TL84)**, **2700 K (A)**, **3000 K (TL83)**, **UV**) for perfect assessment and comparison of colour under various light types. A light diffuser provides a uniform distribution of light. Upon request light types can be exchanged. A **Calibration Certificate** (light quality) is included in the scope of supply.

An **electronic light automatism** enables a programmable automatic change of light sources in connection with adjustable times of illumination. The user can programme a sequence of the individual light types (up to 10 changes) in any desired order.



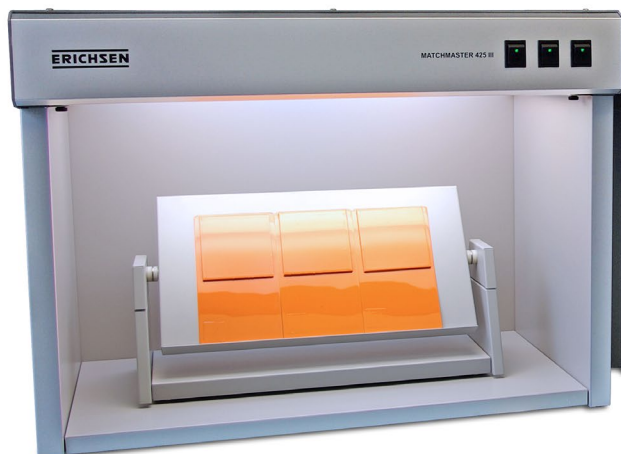
Control panel

The **MATCHMASTER 425 MC II/LED** is equipped with a **light monitoring facility** "ColorGuard 3.0" which observes all five light sources, records the hours alight of the individual tubular lamps, and indicates the exchange of a light bulb replacement, if required.

### Accessories

- 45° Viewing Stand (31 x 91 cm), neutral grey
- Adjustable Viewing Stand (31 x 61 cm)
- Matt black Insert Panel Set made of aluminium, including side walls, rear wall and floor panels

## MATCHMASTER 425 III/LED and 425 IV/LED



Model 425 III/LED



Model 425 IV/LED

### Design and Function

The standard light cabinets **MATCHMASTER 425 III/LED** and **425 IV/LED** are colour comparison instruments **with three LED light sources: 6500 K (D65), 4000 K (TL84) and 2700 K (A)**. A light diffuser for a uniform distribution of light is available at option. It is possible to switch over between these three standard light sources manually in any desired order. Each cabinet comes with a **Test Certificate** (light quality).

Both bench models consist of metal sheets lacquered conforming to standards and can be assembled without any tool within some minutes. The colour comparison cabinets are open at the front side.

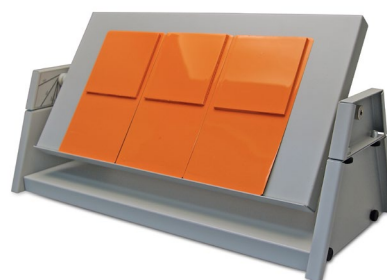
A control panel with illuminated toggle switches - the symbols of the three light sources are shown above - provides an easy operation of the instrument.



Control panel

### Accessories

- Light diffuser
- 45° Viewing Stand, for Model 425 III/LED (22 x 56 cm), for Model 425 IV/LED (22 x 41 cm), neutral grey surround
- Adjustable Viewing Stand 31 x 61 cm) f. Model 425 III/LED
- Adjustable Viewing Stand (20 x 41 cm) f. Model 425 IV/LED, 425 III/LED, 425 MC-II/LED (
- Matt black Insert Panel Set made of aluminium, including side walls, rear wall and floor panels



adjustable Viewing Stand



45° Viewing Stand

## Technical Data

	425 MC II/LED	425 III/LED	425 IV/LED
Dimensions (W/D/H)	1070 x 680 x 790 mm	680 x 420 x 480 mm	520 x 340 x 460 mm
Viewing area	1020 x 640 x 640 mm	610 x 340 x 360 mm	460 x 250 x 330 mm
Net weight (approx.)	44 kg	14 kg	10 kg
Power supply	230 V, 50 Hz (110 V, 60 Hz on request)	230 V, 50 Hz (110 V, 60 Hz on request)	230 V, 50 Hz (110 V, 60 Hz on request)
Consumption (approx.)	602 W / 2.62 A	180 W / 0.79 A	116 W / 0.51 A

Order Information	
Ord.-No.	Product Description
02780431	<b>Colour Matching Cabinet MATCHMASTER 425 MC II/LED</b> microprocessor-controlled, LED light sources (6500 K (D65), 4000 K (TL84), 2700 K (A), 3000 K (TL83), UV); including Calibration Certificate as well as light diffuser, electronic light automatism, and light monitoring system, manual
02780531	<b>Colour Matching Cabinet MATCHMASTER 425 III/LED</b> LED light sources (6500 K (D65), 4000 K (TL84), 2700 K (A)); including Test Certificate, manual
02780631	<b>Colour Matching Cabinet MATCHMASTER 425 IV</b> LED light sources (6500 K (D65), 4000 K (TL84), 2700 K (A)); including Test Certificate, manual

Conversion of old Colour Matching Cabinets:	
Ord.-No.	Produkt Description
08230732	LED lamp top part assembly, complete, for LED conversion of an existing cabinet 425 MC-II
08240832	LED lamp top part assembly, complete, for LED conversion of an existing cabinet 425 III
08250732	LED lamp top part assembly, complete, for LED conversion of an existing cabinet 425 IV

Accessories	
Ord.-No.	Product Description
	<b>For MATCHMASTER 425 MC II/LED</b>
08230132	45° Viewing Stand (31 x 91 cm)
08230232	Adjustable Viewing Stand (31 x 61 cm)
08240232	Adjustable Viewing Stand (20 x 41 cm)
08230332	Insert Panel Set (black aluminium panels for high gloss, specular or very dark colour samples)
	<b>For MATCHMASTER 425 III/LED</b>
08240632	Light diffuser
08240132	45° Viewing Stand (22 x 56 cm)
08240232	Adjustable Viewing Stand (20 x 41 cm)
08230232	Adjustable Viewing Stand (31 x 61 cm)
08240332	Insert Panel Set (black matt aluminium panels for high gloss, specular or very dark colour samples)
	<b>For MATCHMASTER 425 IV/LED</b>
08250532	Light diffuser
08250132	45° Viewing Stand (22 x 41 cm)
08240232	Adjustable Viewing Stand (20 x 41 cm)
08250232	Insert Panel Set (matt black aluminium panels for high gloss, specular or very dark colour samples)

Subject to technical modifications  
TBE 425 – X/2025